

MRI eSight



About eSight



To provide simple collection and powerful analysis of all energy related data.

Your energy. Our Platform. One Solution.

Our mission is to enable our customers to centralize and analyze all types of data affecting the energy efficiency of their buildings/equipment regardless of the data's source, system or format.

eSight Energy is committed to delivering solutions that provide powerful analytics coupled with unrivalled ease-of-use, providing the gold standard in energy management software globally.

Global Reach



60+

Countries

33k+

Users

\$5bn

Monitored

260k+

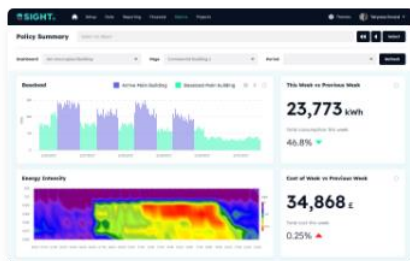
Buildings

Importance of Data – MRI eSight



Connect to building systems via open architecture integration
 (API Push/Pull, IoT, Modbus TCP/IP, OBIX, OPC DA/HDA, ALC,
 FTP/SFTP/FTPS, Email and more)

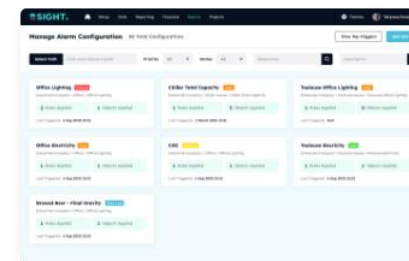
Analyze
energy cost



Generate
carbon reports



Detect
abnormal energy use



Working with Organisations Across The Globe

Property



Facilities Management



Aerospace and Automotive



Brewing



Federal & State Government



Pharmaceutical



Education



Coats User case – pilot project - Turkey



- Turkey site selected for pilot trial.
- Team using eSight identified potential savings of \$50k per month.
- Projected year end savings identified \$150 k to year end 2021.
- Major savings in Compressed Air project identified resulting in shutting down of one of three major compressors.
- Site core team continue to analyse data from eSight, make behavioural changes in manufacturing to take advantage of dynamic data.
- Communication of successes through dashboards distributed across site. Future development of ENVI dashboard to go live across plant.
- Due to dynamic data being readily available, core team time spent more on analysis not collecting data
- eSight now installed in 8 sites globally, current value deliver of project to year end 2022 will be in excess of **\$700,000 USD**.
- Many of the value delivery on this project are due to good data analysis, behavioural changes, low cost/ no cost changes.

